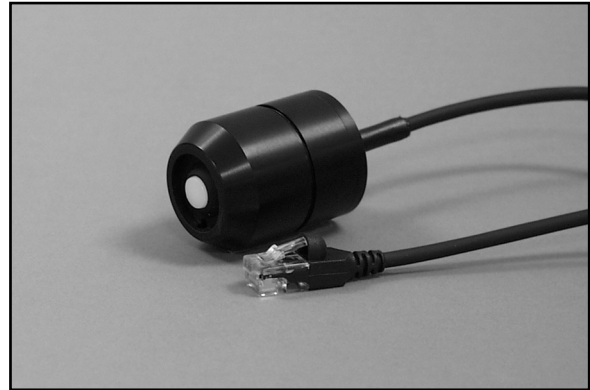


## Silicon Pyranometer Smart Sensor (Part # S-LIB-M003)

The Silicon Pyranometer smart sensor is designed to work with the HOBO® Weather Station logger. The smart sensor has a plug-in modular connector that allows it to be added easily to a HOBO Weather Station. All calibration parameters are stored inside the smart sensor, which automatically communicates configuration information to the logger without the need for any programming, calibration, or extensive setup.



Specifications	Silicon Pyranometer Smart Sensor
Measurement Range	0 to 1280 W/m <sup>2</sup>
Spectral Range	300 to 1100 nm (see Figure 4)
Accuracy	Typically within ± 10 W/m <sup>2</sup> or ± 5%, whichever is greater in sunlight; Additional temperature induced error ± 0.38 W/m <sup>2</sup> /°C from +25°C (0.21 W/m <sup>2</sup> /°F from +77°F)
Angular Accuracy	Cosine corrected 0 to 80 degrees from vertical (see Figure 5); Azimuth Error < ±2% error at 45 degrees from vertical, 360 degree rotation
Resolution	1.25 W/m <sup>2</sup>
Drift	< ±2% per year
Calibration	Factory recalibration available
Operating Temperature Range	-40° to +75°C (-40° to +167°F)
Environmental Rating	Weatherproof
Housing	Anodized aluminum housing with acrylic diffuser and O-ring seal
Dimensions	4.1 cm height x 3.2 cm diameter (1 5/8 in. x 1 1/4 in.)
Weight	120 g (4 oz)
Bits per Sample	10
Number of Data Channels *	1
Measurement Averaging Option	Yes
Cable Length Available	3.0 m (9.8 ft)
Length of Smart Sensor Network Cable *	3.0 m (9.8 ft)
Part Number	S-LIB-M003
Ⓒ Specification	This product meets CE specification EN61326 criterion C for ESD, criterion C for Radiated Immunity, criterion B for Fast Transient, criterion A for Conducted Immunity, and criterion A for Power Frequency Magnetic Fields. To minimize measurement errors due to ambient RF, use the shortest possible probe cable length and keep the probe cable as far as possible from other cables.

\* A single HOBO Weather Station can accommodate 15 data channels and up to 100 m (328 ft) of smart sensor cable (the digital communications portion of the sensor cables).

## Silicon Pyranometer Smart Sensor

### Inside this Package

- Silicon Pyranometer smart sensor

### Mounting

#### Accessories

- Light Sensor Mounting Bracket (Part # M-LBA)
- Light Sensor Level (Part # M-LLA)

#### Bracket Mounting

It is recommended that you mount the Silicon Pyranometer smart sensor with the light sensor bracket on a pole or tripod (see Figure 1). To mount the sensor using the bracket:

1. Attach the light sensor bracket to a  $1\frac{1}{4}$  inch to  $1\frac{5}{8}$  inch pole with the provided U-bolts. **Note:** The bracket can also be mounted on a flat, vertical surface using four screws.
2. Position the Silicon Pyranometer sensor on top of the bracket with its cable running through the slot in the bracket.
3. Using the two screws supplied, attach the sensor to the bracket through the two holes on either side of the slot. **Note:** Do not completely tighten the screws until you level the sensor.
4. Position the bracket so it faces toward the equator, minimizing the chance of shading.
5. Mount the bracket on the mast with the two U-bolt assemblies, mounting it high enough on the mast to avoid the possibility of shading the sensor.
6. **Note:** If you mount the sensor above eye level, it is recommended that you use a step ladder or other secure platform when leveling the sensor so that you can clearly view the Light Sensor Level (Part # M-LLA).

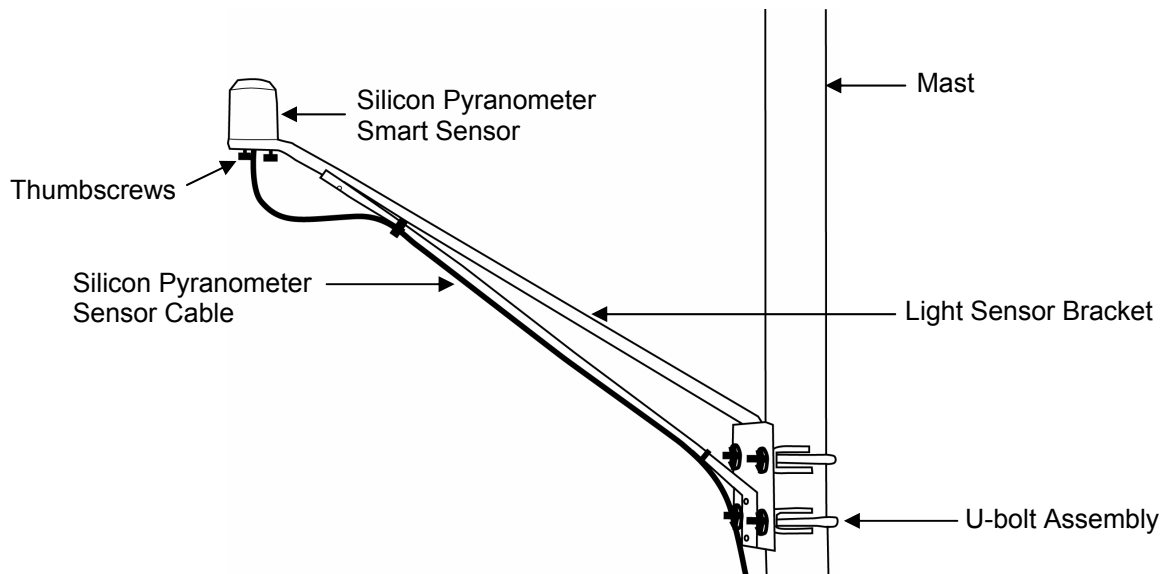


Figure 1: Silicon Pyranometer Sensor Bracket Mounting

7. Make sure the screws holding the sensor to the mounting bracket are loose.
8. Place the Light Sensor Level on the Silicon Pyranometer smart sensor.

## Silicon Pyranometer Smart Sensor

- Adjust the height of the thumbscrews to level the sensor (start with the thumbscrews protruding about 1/16 inch from the bracket).
- Once the sensor is near level, tighten the Phillips head screws.
- Check the level and repeat above steps if necessary (see Figure 2).
- Don't forget to remove the level when you are done with it!*

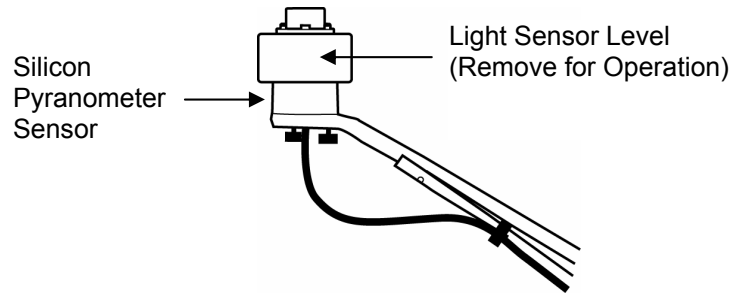


Figure 2: Leveling the Sensor on the Light Sensor Bracket

## Specialized Application Mounting

To mount the Silicon Pyranometer sensor using a mounting plate of your own design:

- Drill two #25 holes 9/16 inches apart and a 0.31 inch diameter slot in the mounting plate (see Figure 3). **Note:** The plate should be a thickness of 1/8 inch or less.
- Slide the sensor through the 0.31 inch diameter slot.
- Attach the sensor using two 6-32 x 3/8 inch screws and lock washers (not included).
- Shim the sensor as necessary to level it.

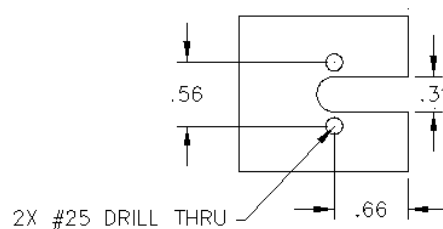


Figure 3: Recommended Mounting Plate Dimensions

## Mounting Considerations

- Small errors in alignment can produce significant errors. Be certain the sensor is mounted level.
- Mount the sensor where it will not be in a shadow. Any obstruction should be below the plane of the sensor head. If that is not possible, try to limit obstructions to below 5 degrees, where the effect will be minimal.
- If possible, avoid placing the sensors in dusty locations. Dust, pollen, and salt residue that collect on the top of the sensor can significantly degrade accuracy.
- Refer to the *HOBO Weather Station User's Guide* for more information about setting up complete HOBO Weather Stations.

## **Connecting**

To start using the Silicon Pyranometer smart sensor, stop the HOBO Weather Station logger and insert the modular jack into an available port. If a port is not available, use a 1-to-2 adaptor, which allows you to plug two sensors into one port (Part # S-ADAPT). The next time you use the HOBO Weather Station, it will automatically detect the new smart sensor. Note that the HOBO Weather Station supports a maximum of 15 data channels; this sensor uses one channel. Launch the logger and verify the sensor is functioning correctly. See the *HOBO Weather Station User's Guide* for more details about connecting smart sensors to the HOBO Weather Station.

## **Operation**

The Silicon Pyranometer smart sensor supports measurement averaging. When measurement averaging is enabled, data is sampled more frequently than it is logged. The multiple samples are then averaged together and the average value is stored as the data for the interval. For example, if the logging interval is set at 10 minutes and the sampling interval is set at 1 minute, each recorded data point will be the average of 10 measurements. Measurement averaging is useful for reducing noise in the data. It is recommended that you use measurement averaging whenever the Silicon Pyranometer smart sensor is placed in an area where the light level can vary quickly with respect to the logging interval (for example, during partly cloudy conditions). Note that fast sampling intervals (less than 1 minute) may significantly reduce battery life. See the *HOBO Weather Station User's Guide* for more details about sensor operation and battery life.

## **Spectral Characteristics**

This sensor uses a silicon photodiode to measure solar power per unit area (watts per square meter). Silicon photodiodes are not ideal for use as solar radiation sensors and the photodiode in this Silicon Pyranometer is no exception (see Figure 4). An ideal pyranometer has equal spectral response from 280 to 2800 nm. However, when calibrated properly and used correctly, the Silicon Pyranometer smart sensor should perform well in most situations.

The sensor is calibrated for use in sunlight (an Eppley Precision Spectral Pyranometer is used as reference standard). Accordingly, if the sensor is used under natural sunlight, the measurement errors will be small. Note that significant errors may result from using the sensor under artificial light, within plant canopies, in greenhouses, or any other conditions where the spectral content differs from sunlight.

Sun's Relative Intensity and the Typical Relative Response of the Silicon Pyranometer versus Wavelength

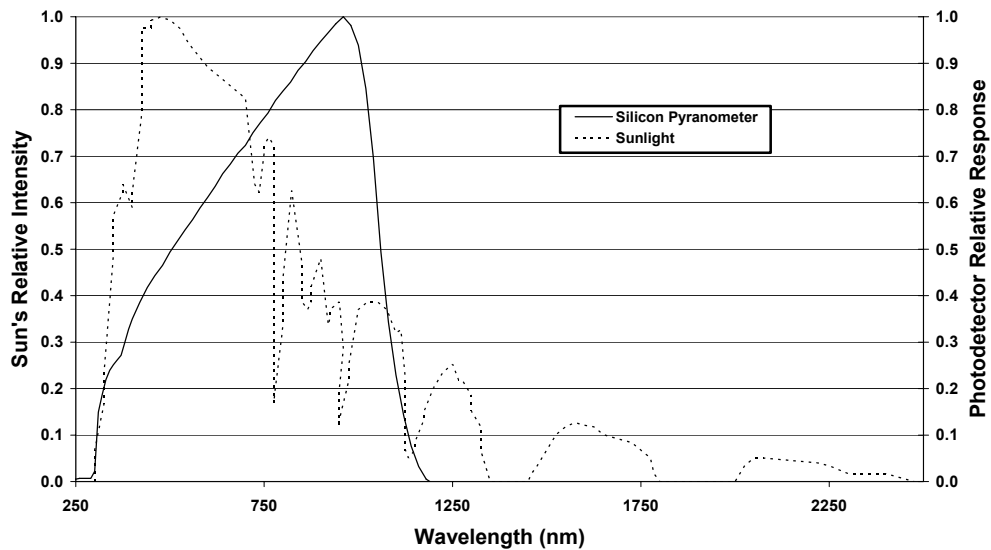


Figure 4: S-LIB-M003 Silicon Pyranometer Response Curve

**Cosine Correction**

The Silicon Pyranometer smart sensor housing is designed to give an accurate cosine response. Figure 5 shows a plot of relative intensity versus angle of incidence for a typical sensor and for the theoretical ideal response. Deviation from ideal response is less than 5% from 0 to 70 degrees and less than 10% from 70 to 80 degrees. Note that as the angle approaches 90 degrees, the ideal cosine response approaches zero. As a result, small errors in measured intensity will result in very large percentage errors compared to the ideal response from 80 to 90 degrees.

Typical Cosine Response of Silicon Pyranometer

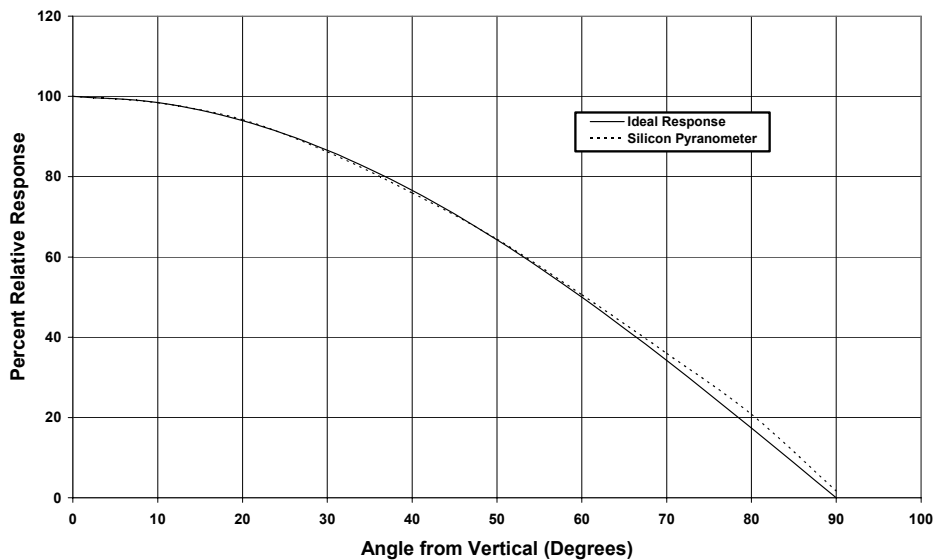


Figure 5: S-LIB-M003 Typical Cosine Response Curve

## **Silicon Pyranometer Smart Sensor**

### **Maintenance**

Dust on the sensor will degrade sensor accuracy. Periodically inspect the sensor and if necessary, gently clean the diffuser with a damp sponge. Do not open the sensor as there are no user serviceable parts inside.

**Warning:** DO NOT use alcohol, organic solvents, abrasives, or strong detergents to clean the diffuser element on the Silicon Pyranometer smart sensor. The acrylic material used in the sensor can be crazed by exposure to alcohol or organic solvents. Clean the sensor only with water and/or a mild detergent such as dishwashing soap if necessary. It is recommended that you use vinegar to remove hard water deposits from the diffuser element. Under no circumstances should the sensor be immersed in any liquid.

### **Verifying Sensor Accuracy**

It is recommended that you test the Silicon Pyranometer smart sensor annually for accuracy. If the sensor is not providing accurate data, it may be damaged or out of calibration. If you are unsure of accuracy, send the smart sensor back to Onset for testing and possible re-calibration. Only Onset can complete calibration. Contact Onset or your dealer for a Return Merchandise Authorization (RMA) number before sending the sensor.

### **Warranty**


This product is warranted to be free from defects in material and workmanship for a period of one year from the date of original purchase. During the warranty period Onset will, at its option, either repair or replace products that prove to be defective. This warranty is void if the Onset products have been damaged by customer error or negligence, or if there has been an unauthorized modification.

### **Tune-up Service**

Onset will examine and retest this and any other smart sensor.

---

© 2002–2003 Onset Computer Corporation. All rights reserved.  
Onset and HOBO are registered trademarks of Onset Computer Corporation.

 The CE Marking identifies this product as complying with all relevant directives in the European Union (EU).

Onset Part #: MAN-S-LIB  
Document #: 6708-B