



OM-CP-HITEMP-150FP

Extended Range Temperature Data Logger with Flexible Probe

Part of the NOMAD® Family

Starts at
\$499



- ✓ Extended Temperature Range
- ✓ Flexible Probe
- ✓ Silicone Rubber Enclosed Cable
- ✓ Rugged
- ✓ Reusable
- ✓ Submersible
- ✓ Programmable Start Time
- ✓ Real-Time Operation
- ✓ NIST Traceable
- ✓ Easy-To-Use Software
- ✓ Low Cost



OM-CP-HITEMP-150FP, \$499, shown smaller than actual size

The OM-CP-HITEMP-150FP is a small, rugged, reusable temperature data logger specifically designed for deployment in harsh environments.

The OM-CP-HITEMP-150FP comes standard with a 0.6 m (24") flexible silicone rubber enclosed cable, 101 mm (4") penetration style stainless steel probe, and 316 stainless steel body (other cable lengths available through special order). With a measurement range of -40 to 150°C (-40 to 302°F), the OM-CP-HITEMP-150FP is perfect for use in autoclaves, medical and pharmaceutical labs, food preparation and processing plants, dishwashers, and other applications involving extreme temperatures.

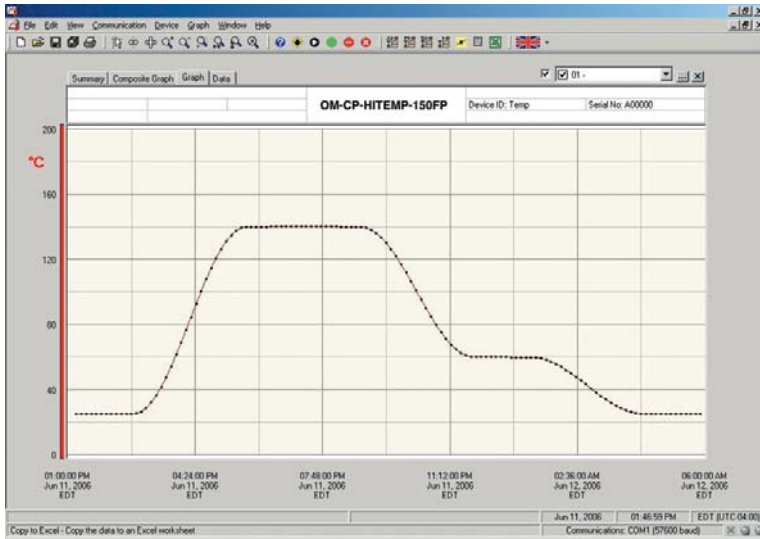
The OM-CP-HITEMP-150FP features an RTD temperature sensor, which allows for extremely fast response times and highly accurate readings.

Reading rates are configurable from once every second to once every twelve hours. With a reading limit of 32,767 data points, the OM-CP-HITEMP-150FP is perfect for use in even the longest of processes. Its real time clock ensures that all data is time and date stamped, making it easy to track and analyze temperature changes. The logger can be set for an immediate start or for activation at a future date and time, allowing for simultaneous data recording via the deployment of multiple loggers. Its non-volatile solid state memory keeps written data intact, even if the battery, which is user changeable, becomes discharged.

One of the most powerful features of the OM-CP-HITEMP-150FP is the accompanying software. OMEGA's easy-to-use Windows

based program features a variety of powerful tools, all of which work together to allow for the effortless creation and exportation of professionally formatted spreadsheets and customized graphs. Complex analyses, such as Mean Kinetic Temperature, Sterilization Units, and Pasteurization Units, can be performed with just one click of the mouse. In addition to the analysis of data, Omega's software is used for the digital calibration of the OM-CP-HITEMP-150FP.

Thanks to the software's easy calibration wizard, this task can be quickly performed by even the most novice of computer users. For those requiring an additional guarantee of accuracy, NIST calibration certificates are available.



OM-CP-IFC200, \$119, Windows software displays data in graphical or tabular format.



OM-CP-HITEMP-150FP, \$499, shown smaller than actual size

Specifications

Temperature Sensor:

100Ω Platinum RTD

Temperature Range:

-40 to 150°C (-40 to 302°F)

Specified Accuracy Range:

Both probe and logger body between 80 to 140°C (176 to 284°F)

Temperature Resolution:

0.05°C

Calibrated Accuracy:

±0.5°C

Start Time:

Software programmable start time and date, up to six months in advance

Real Time Recording:

May be used with PC to monitor and record data in real time

Memory:

32,767 readings

Reading Interval:

1 reading every second to 1 every 12 hours

Lethality Equations:

Sterilization unit and Pasteurization units are available in the software with a click of a button

Calibration: Digital calibration through software

Calibration Date: Automatically recorded within device

Power: 3.9 V high-temperature lithium battery (included), user replaceable.

Battery Life: 1 year typical (1 min reading rate @ 25°C)

Data Format: Date and time stamped °C, °F, K, °R

Time Accuracy: ±1 minute/month at 20°C (interface cable not in use)

Computer Interface:

PC serial or USB (interface cable required); 2,400 baud

Software: Windows 95/98/ME/NT/2000/XP/VISTA

Operating Environment:

-40 to 150°C (-40 to 302°F), 0 to 100% RH



Dimensions (Body):

28 x 45 mm dia (1.1 x 1.75")

Dimensions (Cable*):

60 cm x 4 mm dia (2' x .14")

Dimensions (Probe Handle):

43 x 10 mm dia (1.7 x 0.375" dia)

Dimensions (Probe):

102 x 4 mm dia (4.0 x 0.125")

Material (Body and Probe):

316 SS

Material (Cable*):

Silicone rubber

Weight:

227 g (9 oz)

* Other cable lengths available upon request.

AVAILABLE FOR FAST DELIVERY!

To Order (Specify Model Number)

Model No.	Price	Description
OM-CP-HITEMP-150FP	\$499	Extended range temperature data logger with flexible probe
OM-CP-HITEMP-150FP-CERT	559	Extended range temperature data logger with flexible probe and NIST calibration certificate
OM-CP-IFC110	99	Windows software and 1.2 m (4') RS-232 cable with DB9F termination
OM-CP-IFC200	119	Windows software and 3.7 m (12') USB interface cable
OM-CP-BAT108	99	Replacement 3.9 V lithium battery
CS-3785	150	Reference Book: McGraw-Hill Dictionary of Scientific and Technical Terms

Operator's manual is included with the OM-CP-IFC110 Windows software and RS-232 cable, (required to operate the data logger and sold separately).

Ordering Example: OM-CP-HITEMP-150FP, extended range temperature data logger and OM-CP-IFC110, Windows software with RS-232 cable, \$499 + 99 = \$598.



UNITED STATES

www.omega.com
1-800-TC-OMEGA
Stamford, CT.

CANADA

www.omega.ca
Laval(Quebec)
1-800-TC-OMEGA

GERMANY

www.omega.de
Deckenpfronn, Germany
0800-8266342

UNITED KINGDOM

www.omega.co.uk
Manchester, England
0800-488-488

FRANCE

www.omega.fr
Guyancourt, France
088-466-342

CZECH REPUBLIC

www.omegaeng.cz
Karviná, Czech Republic
596-311-899

BENELUX

www.omega.nl
Amstelveen, NL
0800-099-33-44



More than 100,000 Products Available!

• Temperature

Calibrators, Connectors, General Test and Measurement Instruments, Glass Bulb Thermometers, Handheld Instruments for Temperature Measurement, Ice Point References, Indicating Labels, Crayons, Cements and Lacquers, Infrared Temperature Measurement Instruments, Recorders Relative Humidity Measurement Instruments, RTD Probes, Elements and Assemblies, Temperature & Process Meters, Timers and Counters, Temperature and Process Controllers and Power Switching Devices, Thermistor Elements, Probes and Assemblies, Thermocouples Thermowells and Head and Well Assemblies, Transmitters, Wire

• Flow and Level

Air Velocity Indicators, Doppler Flowmeters, Level Measurement, Magnetic Flowmeters, Mass Flowmeters, Pitot Tubes, Pumps, Rotameters, Turbine and Paddle Wheel Flowmeters, Ultrasonic Flowmeters, Valves, Variable Area Flowmeters, Vortex Shedding Flowmeters

• pH and Conductivity

Conductivity Instrumentation, Dissolved Oxygen Instrumentation, Environmental Instrumentation, pH Electrodes and Instruments, Water and Soil Analysis Instrumentation

• Data Acquisition

Auto-Dialers and Alarm Monitoring Systems, Communication Products and Converters, Data Acquisition and Analysis Software, Data Loggers Plug-in Cards, Signal Conditioners, USB, RS232, RS485 and Parallel Port Data Acquisition Systems, Wireless Transmitters and Receivers

• Pressure, Strain and Force

Displacement Transducers, Dynamic Measurement Force Sensors, Instrumentation for Pressure and Strain Measurements, Load Cells, Pressure Gauges, Pressure Reference Section, Pressure Switches, Pressure Transducers, Proximity Transducers, Regulators, Strain Gages, Torque Transducers, Valves

• Heaters

Band Heaters, Cartridge Heaters, Circulation Heaters, Comfort Heaters, Controllers, Meters and Switching Devices, Flexible Heaters, General Test and Measurement Instruments, Heater Hook-up Wire, Heating Cable Systems, Immersion Heaters, Process Air and Duct, Heaters, Radiant Heaters, Strip Heaters, Tubular Heaters