



THERMO KING KIT

10-325

Subject: Spin-on Fuel/Water Filter

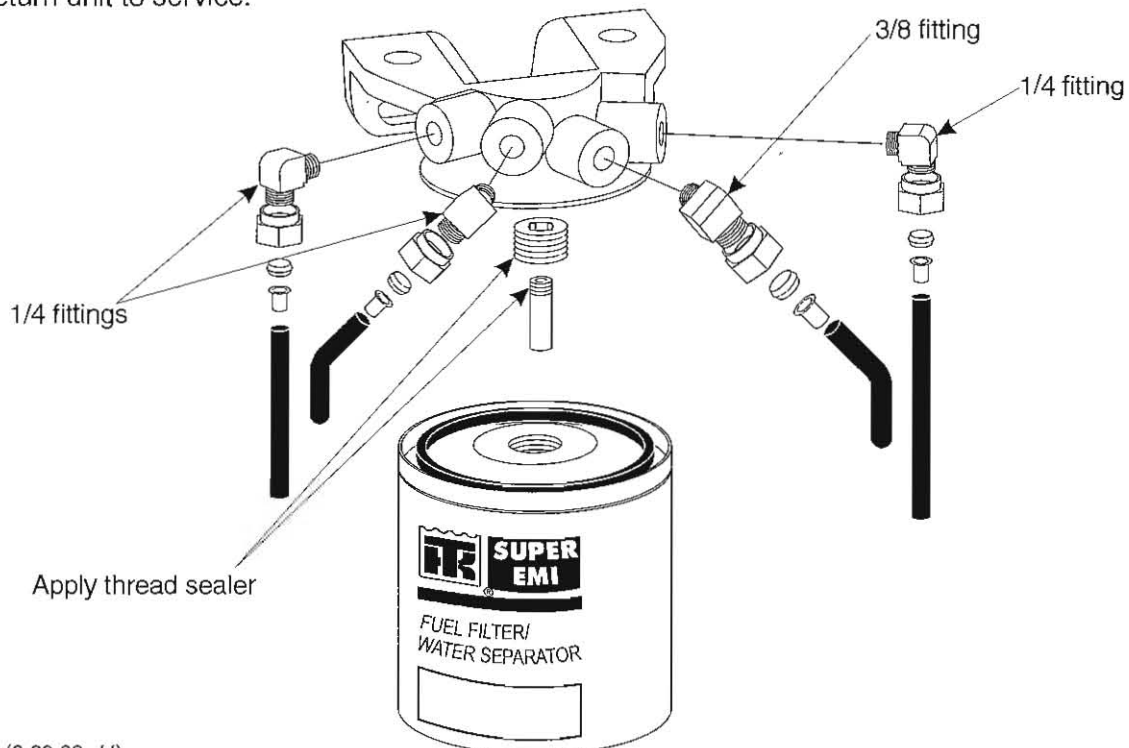
Benefits:

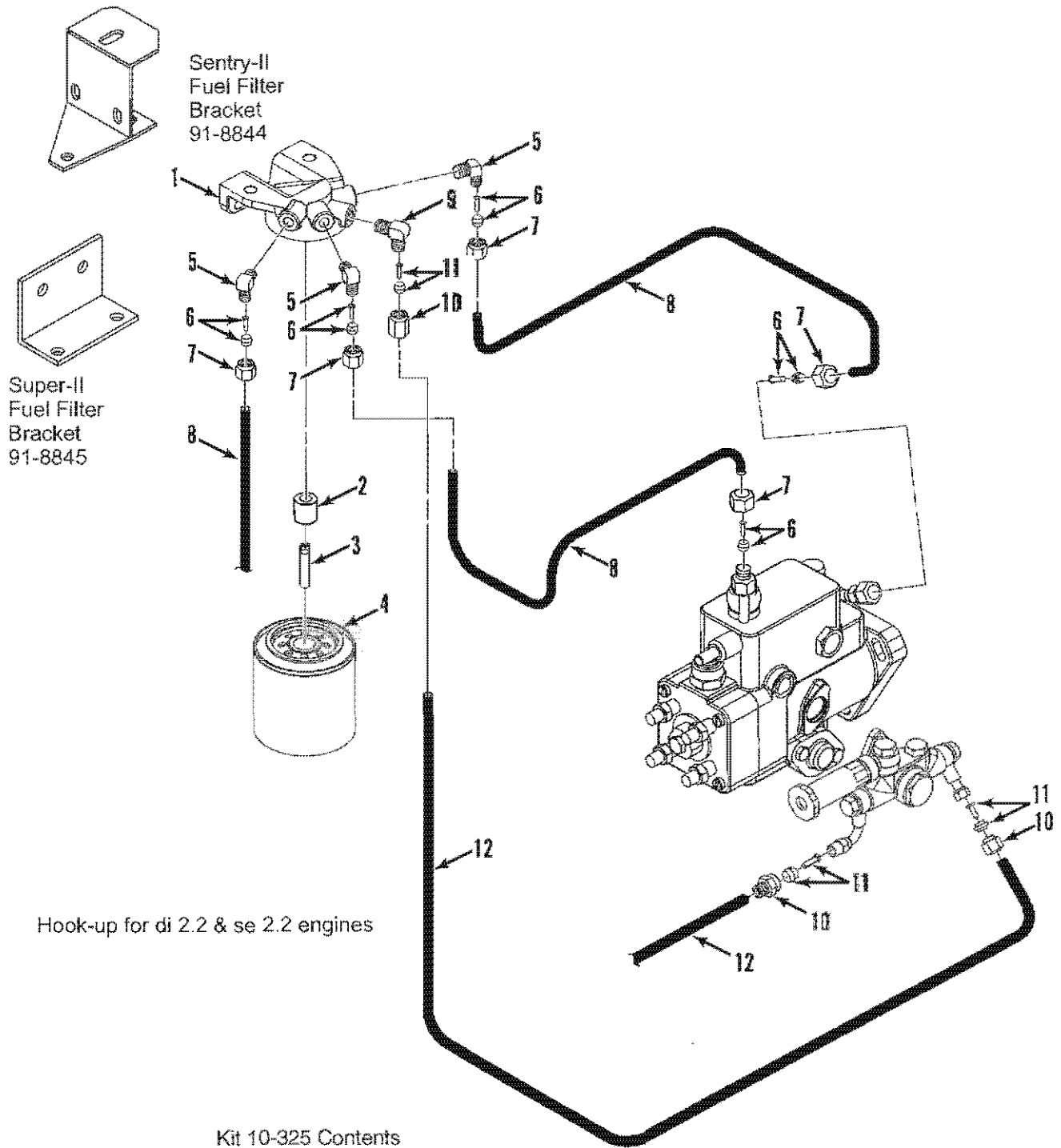
- Eliminate fuel spillage during fuel filter changes
- Easier engine priming
- Less expensive filter changes
- Converts trailer units equipped with di 2.2, se 2.2 & TK 486 engines
- New filter designed exclusively for Thermo King units

NOTE: The kit contains all the parts necessary to convert trailer units square fuel filters with nylon fuel lines to the new spin-on filter system.

Installation instructions

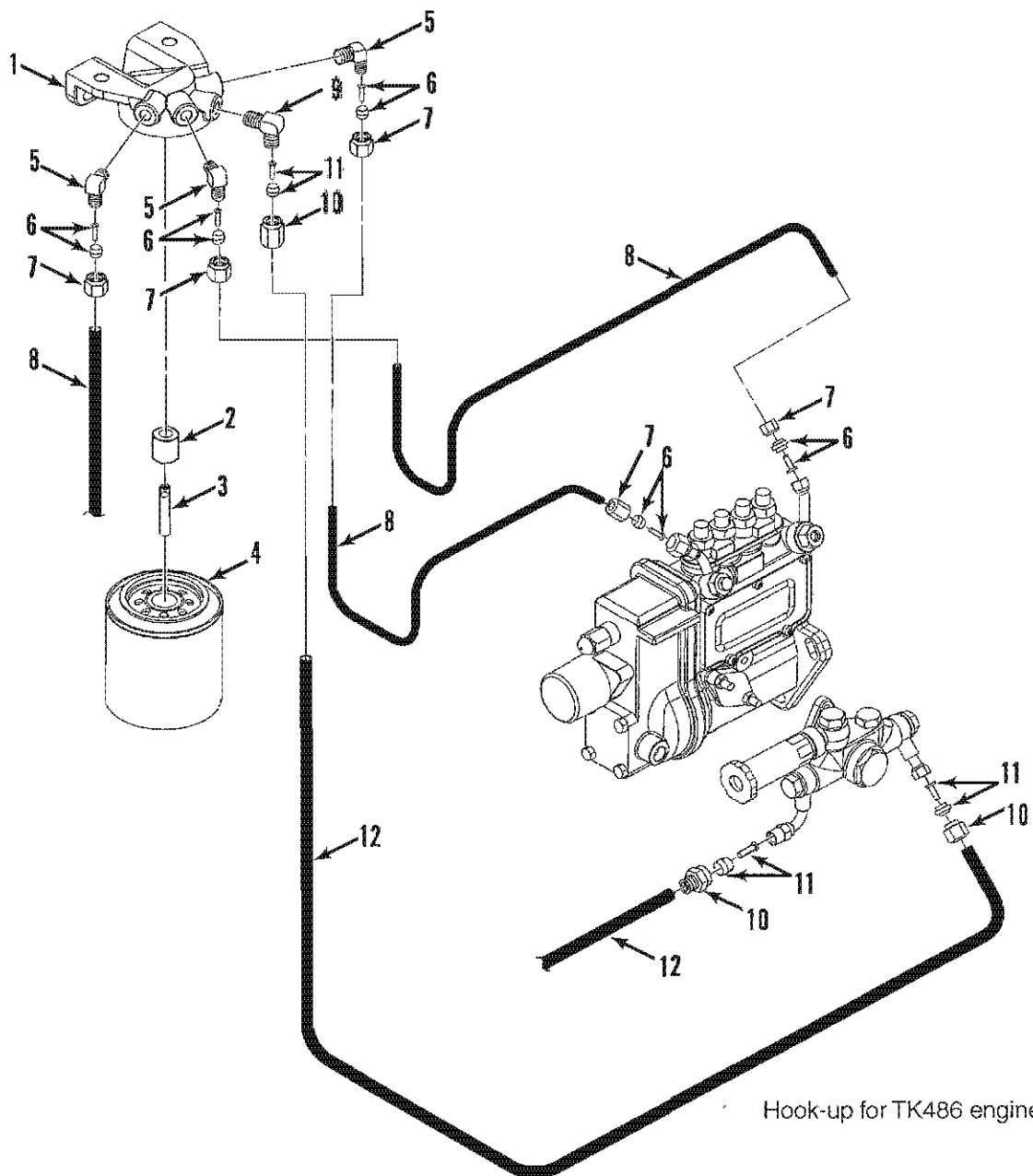
1. Remove and discard the existing fuel filter assembly, save the mounting hardware.
2. Apply thread sealer to the filter spud and install into the filter head with a 3/8 inch square drive, torque to 30 ft-lbs (40.7 N-m).
3. Apply thread sealer to the filter shaft and install into the filter spud with a 1/8 in. hex allen wrench, torque to 24 in-lbs (2.7 N-m).
4. Install the elbows into the filter head per illustrations, rotate to best position for fuel line connections.
5. Mount the bracket into the unit with saved hardware. Bracket 91-8844 is required for Sentry-II, Bracket 91-8845 for Super-II.
6. Route and secure fuel lines with bandwraps as necessary (see illustrations).
7. Install fuel filter, prime the fuel system and check for leaks.
8. Return unit to service.





Kit 10-325 Contents

1	11-9015	HEAD - filter	1
2	11-9017	SPUD - filter	1
3	11-9016	SHAFT	1
4	11-8047	FILTER - fuel	1
5	11-5320	ELBOW 1/4	3
6	10-243	KIT - sleeve & eyelet 1/4	5
7	11-4841	NUT 1/4	5
8	11-9030	HOSE 1/4	8 ft
9	11-4380	ELBOW 3/8	1
10	11-4941	NUT 3/8	2
11	10-242	KIT - sleeve & eyelet 3/8	2
12	11-9031	HOSE 3/8	5 ft
13	55-2330	BANDWRAP - (7 in.)	10



Hook-up for TK486 engines

Kit 10-325 Contents

1	11-9015	HEAD - filter	1
2	11-9017	SPUD - filter	1
3	11-9016	SHAFT	1
4	11-8047	FILTER - fuel	1
5	11-5320	ELBOW 1/4	3
6	10-243	KIT - sleeve & eyelet 1/4	5
7	11-4841	NUT 1/4	5
8	11-9030	HOSE 1/4	8 ft
9	11-4380	ELBOW 3/8	1
10	11-4941	NUT 3/8	2
11	10-242	KIT - sleeve & eyelet 3/8	2
12	11-9031	HOSE 3/8	5 ft
13	55-2330	BANDWRAP - (7 in.)	10

