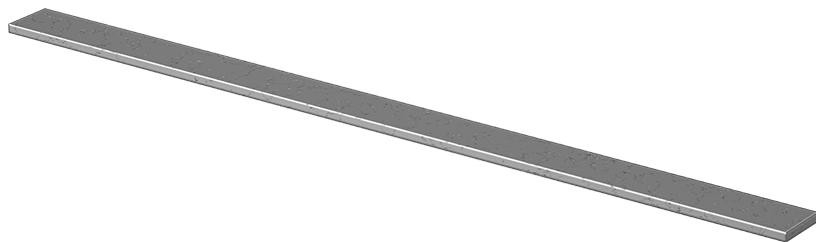




## Low-Carbon Steel Bar

### 1/8" Thick, 3/4" Width

8910K394



Material	Low-Carbon Steel
Cross Section Shape	Rectangle
Construction	Solid
Appearance	Plain
Thickness	1/8"
Thickness Tolerance	-0.006" to 0"
Thickness Tolerance Rating	Undersized
Width	3/4"
Width Tolerance	-0.006" to 0"
Yield Strength	54,000 psi
Fabrication	Cold Worked
Temper Rating	Hardened
Hardness	Rockwell B70
Hardness Rating	Medium
Heat Treatable	Yes
Maximum Hardness after Heat Treatment	Rockwell C60
Temperature Range	Not Rated
Specifications Met	ASTM A108
Straightness Tolerance	Not Rated
Density	0.28 lbs./cu. in.
Surface Resistivity	15 microhm-cm @ 32° F
Thermal Conductivity	350 Btu/hr. × in./sq. ft./°F @ 212° F
Coefficient of Thermal Expansion	$7.1 \times 10^{-6}$
Elongation	23%
Material Composition	

Iron	98.06-99.42%
Carbon	0.13-0.20%
Manganese	0.30-0.90%
Phosphorus	0.04% Max.
Silicon	0.15-0.30%
Sulfur	0.50% Max.
<hr/>	
Length	1/2 ft., 1 ft., 2 ft., 3 ft., 6 ft.
<hr/>	
RoHS	Compliant

Low-carbon steel offers good machinability with excellent weldability. It's widely used for parts that don't require high strength, such as fixture clamps, mounting plates, and spacers. This material can be surface hardened with heat treating.

'  
'