

Figure A-1. Shear Stress (in the X-Y Plane) contours with Applied P=55 kips

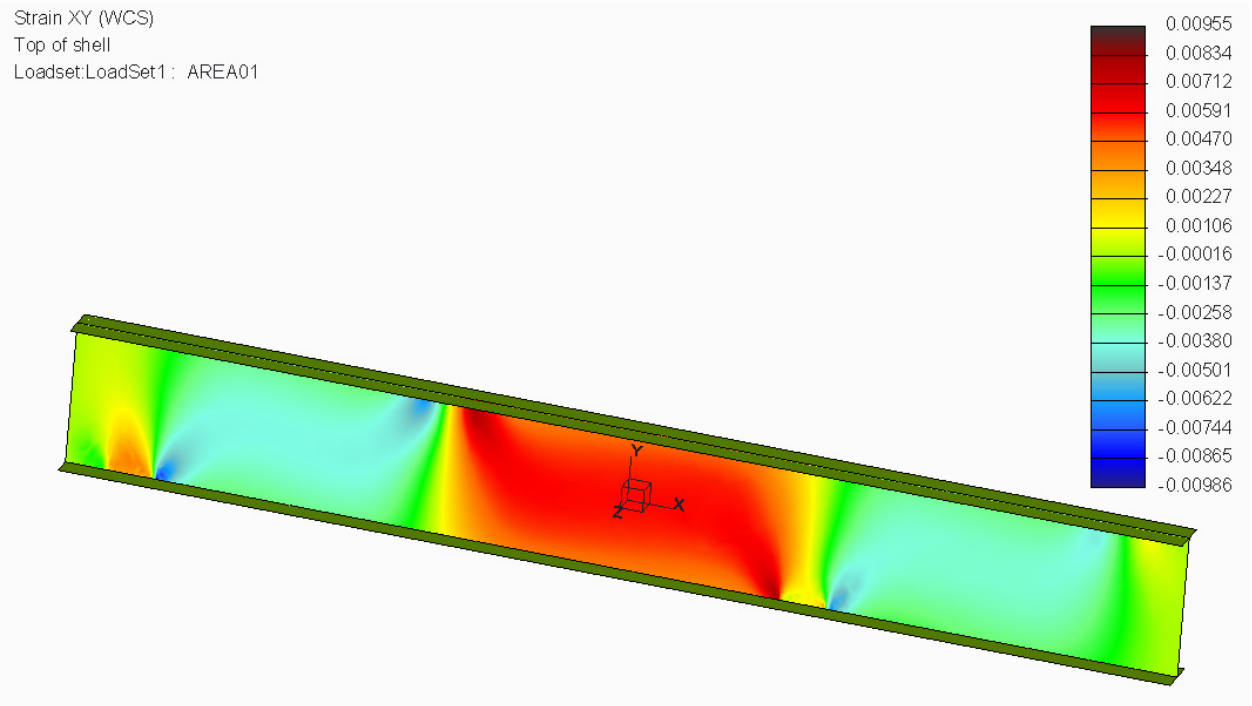


Figure A-2. Shear Strain (in the X-Y Plane) contours with Applied P=55 kips

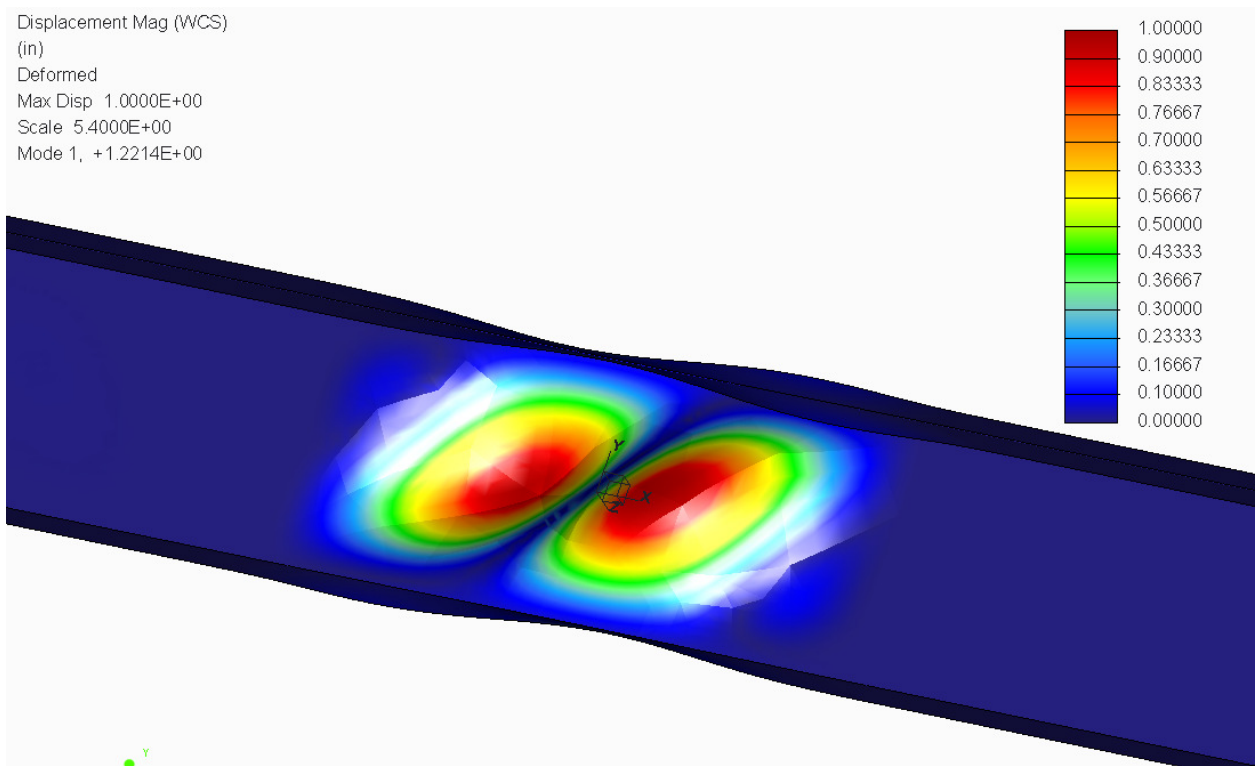


Figure A-3. Displacement at Shear Buckling (mode I). Applied load was obtained as P=65.6 kip

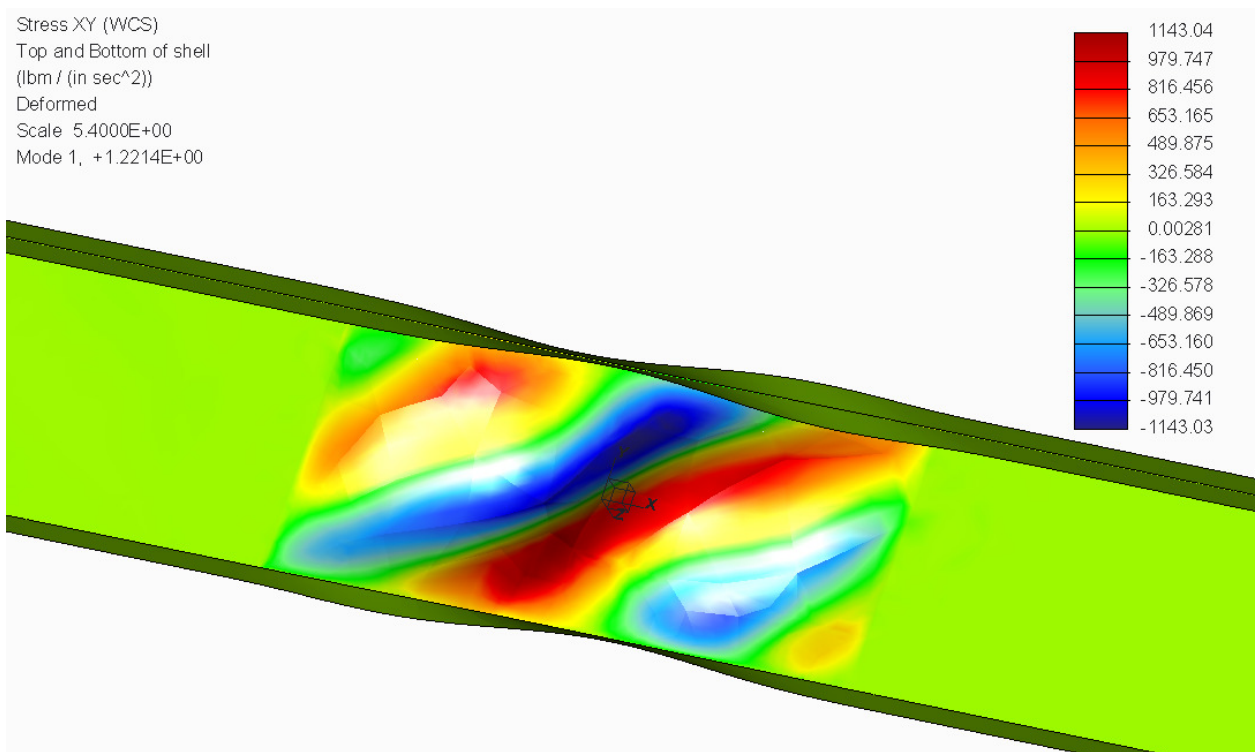


Figure A-4. Shear Stress Contours at Shear Buckling (mode I). Applied load was obtained as P=65.6 kip