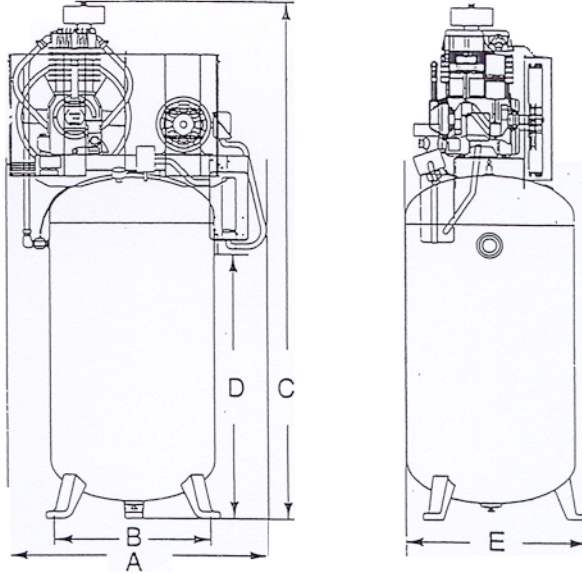


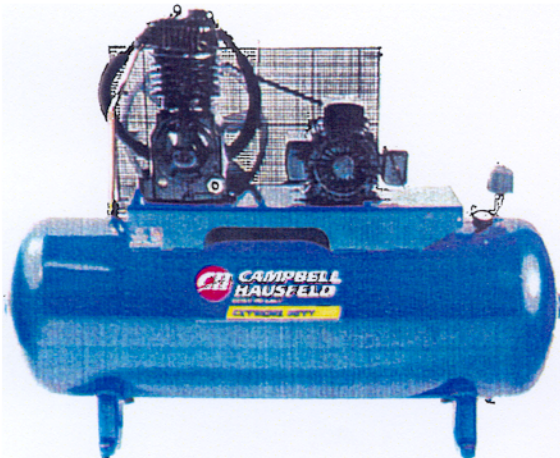
## 5 HP & 7 ½ HP AIR COMPRESSOR SPECIFICATIONS



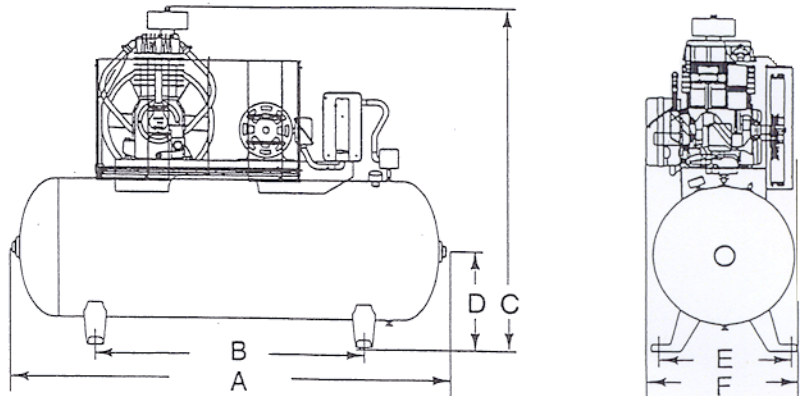
**CI071080VMSA**  
**7 ½ HP Two Stage Vertical**  
**Compressor**



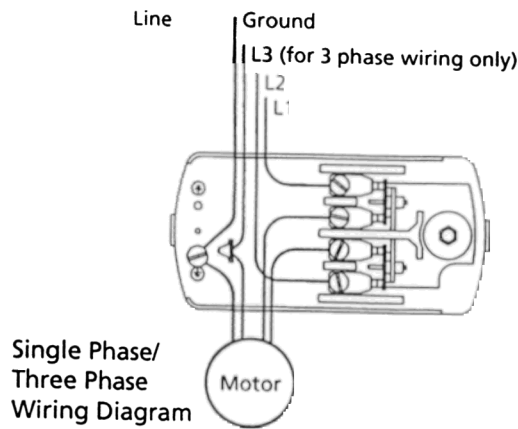
A	Overall width	32.5"
B	Bolt-down width, 120° apart	27"
C	Overall height	75"
D	Tank outlet to ground	40"
E	Overall depth	25.5"



**CI051080H**  
**5 HP Two Stage Horizontal**  
**Compressor**

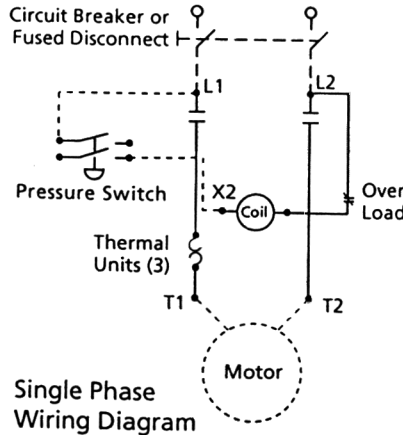


A	Overall width	64"
B	Bolt-down width	40"
C	Overall height	49"
D	Tank outlet to ground	14"
E	Bolt-down depth	18"
F	Overall depth	20.5"



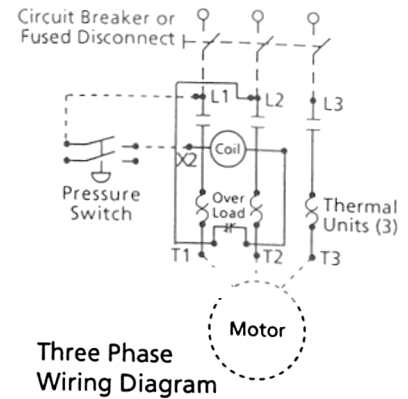
Single Phase/  
Three Phase  
Wiring Diagram

Figure 3 - For Motor Frame Sizes R56HZ, Y56Y or L143T. Refer to Motor Nameplate



Single Phase  
Wiring Diagram

Figure 4 - For Motor Frame Sizes 184T, 215T, 254T or 284T. Refer to Motor Nameplate



Three Phase  
Wiring Diagram

**MINIMUM WIRE SIZE  
USE 75°C COPPER WIRE**

HP	Single Phase	Three Phase	
	230V	208/230V	460/575V
5.0	8 AWG	12 AWG	14 AWG
7.5	8 AWG	10 AWG	12 AWG
10.0	N/A	8 AWG	12 AWG
15.0	N/A	6 AWG	10 AWG
25.0	N/A	3 AWG	8 AWG

**MINIMUM PIPE SIZE  
FOR COMPRESSED AIR LINE**

CFM	Length Of Piping System			
	25'	50'	100'	250'
20	3/4"	3/4"	3/4"	1"
40	3/4"	1"	1"	1"
60	3/4"	1"	1"	1"
100	1"	1"	1"	1 1/4"

**Performance**

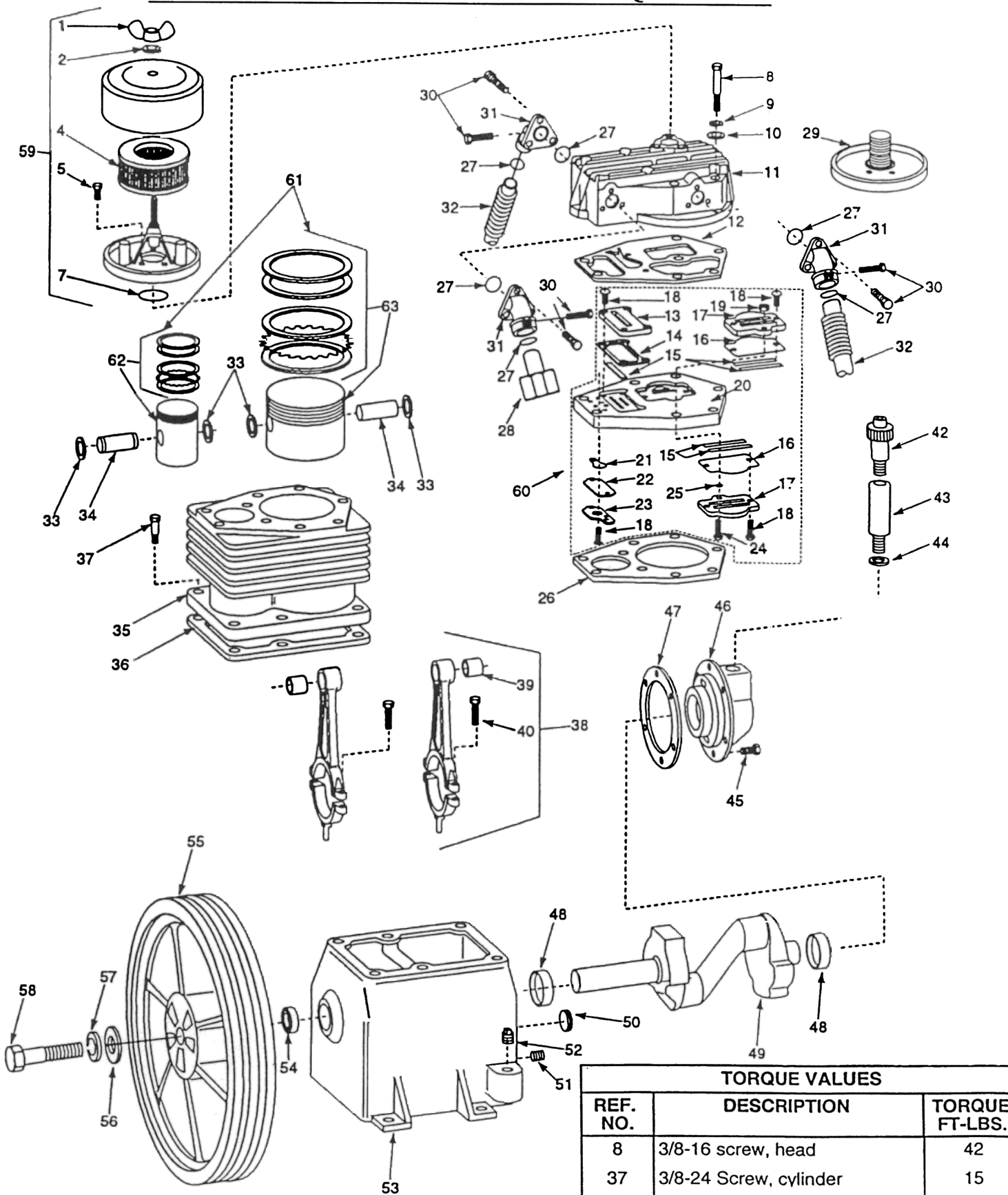
DISCHARGE PRESSURE	MOTOR HP	DISPLACEMENT CFM	DELIVERY CFM	PUMP RPM	APPROX. PULLEY O.D.	APPROX. PULLEY P.D.
100 PSI	5	24.6	20.0	808	7.75	7.4
125 PSI	5	24.5	18.5	760	7.35	7.0
150 PSI	5	21.7	17.5	720	6.95	6.6
175 PSI	5	21.1	17.4	700	6.75	6.4
175 PSI	7.5	31.4	25.1	1020	4.95	4.6

Data based on 1725 RPM electric motors for 5 HP pump, 3450 RPM for 7.5 HP pump, and 1.15 service factor.

Pulley P.D. data based on B section belts and pulleys.

Note: Flow rate data determined in accordance with ASME power test codes.

# 5 HP & 7 1/2 HP AIR COMPRESSOR TORQUE SPECS.



TORQUE VALUES		
REF. NO.	DESCRIPTION	TORQUE FT-LBS.
8	3/8-16 screw, head	42
37	3/8-24 Screw, cylinder	15
39	5/16-18 Screw, connecting rod	14
46	5/16-18 Screw, bearing cap	14
55	7/16-14 Screw, flywheel	30