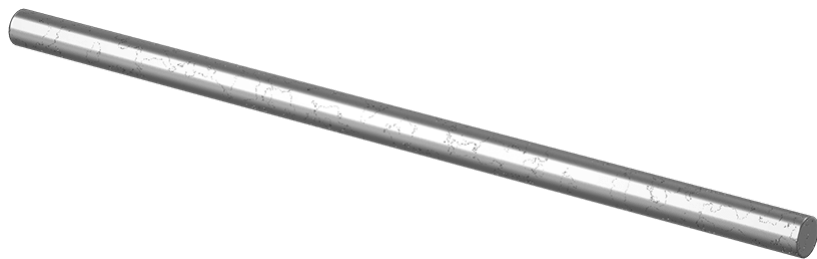




Low-Carbon Steel Rod

1/2" Diameter

\$3.70 Each
8920K155



Material	Low-Carbon Steel
Cross Section Shape	Round
Construction	Solid
Appearance	Plain
Diameter	1/2"
Diameter Tolerance	-0.002" to 0"
Tolerance Rating	Undersized
Yield Strength	54,000 psi
Fabrication	Cold Worked
Temper Rating	Hardened
Hardness	Rockwell B70
Hardness Rating	Medium
Heat Treatable	Yes
Maximum Hardness after Heat Treatment	Rockwell C60
Temperature Range	Not Rated
Specifications Met	ASTM A108
Straightness Tolerance	Not Rated
Density	0.28 lbs./cu. in.
Surface Resistivity	15.9 microhm-cm @ 32° F
Thermal Conductivity	350 Btu/hr. × in./sq. ft./°F @ 212° F
Coefficient of Thermal Expansion	7.1×10^{-6}
Elongation	23%
Material Composition	
Iron	98.06-99.42%
Carbon	0.13-0.20%
Manganese	0.30-0.90%
Phosphorus	0.04% Max.
Silicon	0.15-0.30%
Sulfur	0.50% Max.
Length Tolerance	-1" to 1"
Length	1 ft.

RoHS

Not Compliant

Low-carbon steel offers good machinability with excellent weldability. It's widely used for parts that don't require high strength, such as fixture clamps, mounting plates, and spacers. This material can be surface hardened with heat treating.